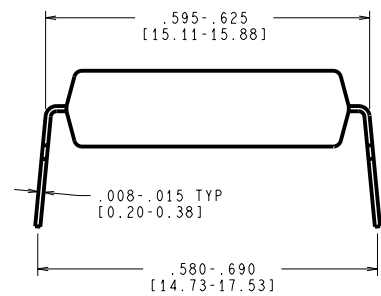
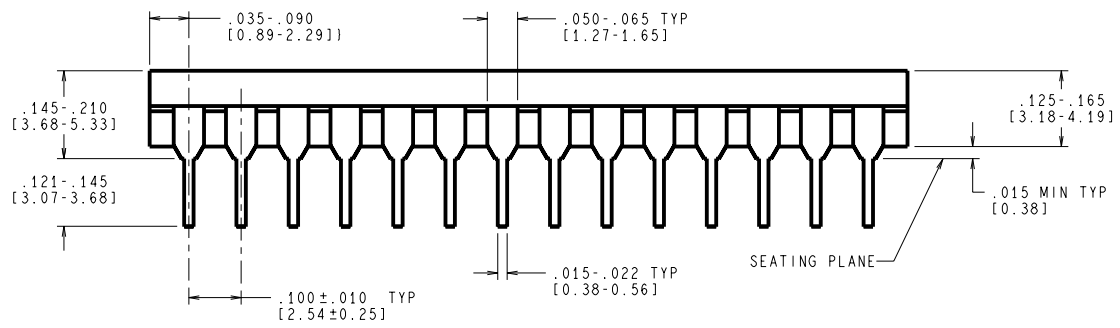
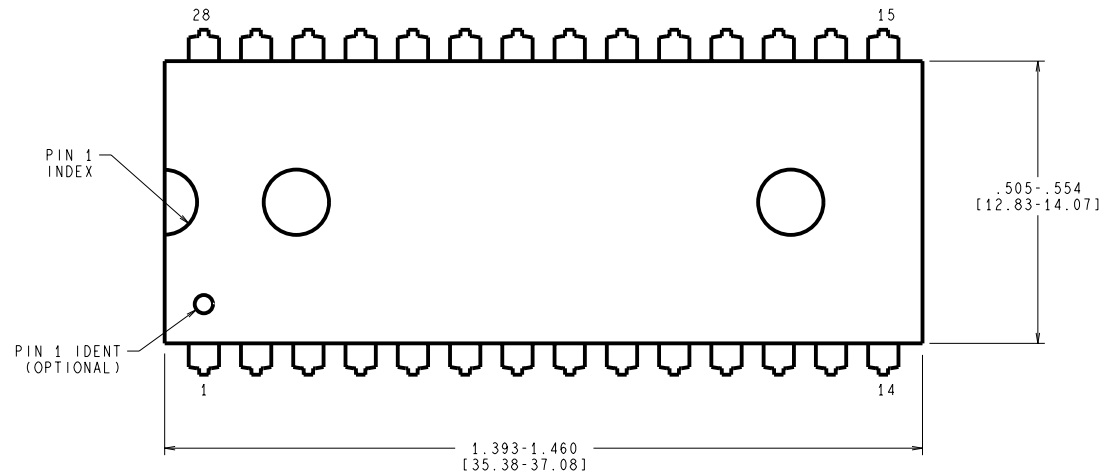


REVISIONS				
LTR	DESCRIPTION	E.C.N.	DATE	BY/APP'D
1	ORIGINATE (X-01611)	N/A	04/12/95	TL/UH
A	RELEASE TO DOCUMENT CONTROL	11004	06/16/95	TL/



CONTROLLING DIMENSION IS INCH
VALUES IN [] ARE MILLIMETERS

NOTES: UNLESS OTHERWISE SPECIFIED

- STANDARD LEAD FINISH:
200 MICROINCHES / 5.08 MICROMETERS MINIMUM LEAD/TIN 37/63
ON ALLOY OR COPPER.

APPROVALS	DATE	National Semiconductor			
DRAWN T. LEQUANG	06/16/95	2900 Semiconductor dr., Santa Clara, CA 95052-8090			
DTG. CHK.		MOLDED DIP, (S), 28 LEAD			
ENGR. CHK.					
PROJECTION		SCALE	SIZE	DRAWING NUMBER	REV
		N/A	C	MKT-NA28F	A
INCH [MM]		DO NOT SCALE DRAWING		SHEET 1 of 1	